

Duo Series B750

Duo Series B750 captures stunning high resolution footage and also merges two images for an expansive 180° viewing experience. Utilizing advanced technology, Duo Series B750 can detect and classify potential objects such as people, vehicles and animals, providing reliable and targeted alerts. With rechargeable battery and fast 5GHz WiFi connection, Duo Series B750 is truly wire-free. You can flexibly and easily install this wireless camera anywhere within minutes. More convenience, more security.

1. Specs



1	Antenna
2	Lens
3	Daylight Sensor
4	Spotlight
5	Infrared Lights
6	Mic

7	PIR Sensor
8	Mounting Bracket



1	Speaker
2	microSD Card Slot
3	Reset Button
4	Power Switch

2. Setup and Install

Set up the Camera

What's in the Box

Note: The package content may vary and update with different version and platforms, please take the below information only for a reference. And the actual package content are subject to the latest information on the product selling page.
Duo Series B750



Duo Series B750*1



Antennas



Quick Start Guide



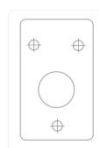
Surveillance Sticker



Mounting Plate



Pack of Screws



Mounting Hole Template

*1



USB-C Cable



Strap

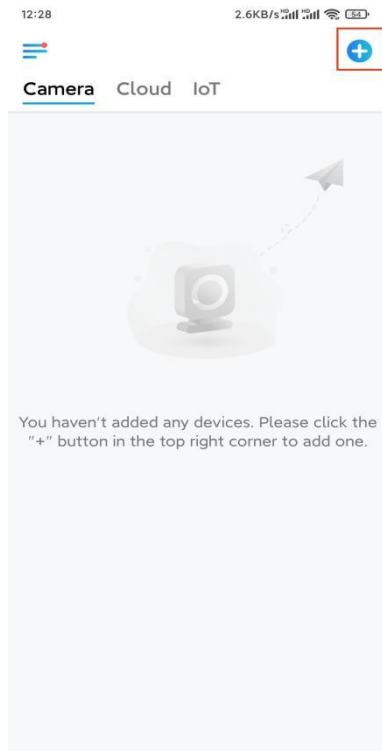
Set up the camera on the App

Please follow the steps below to do initial setup for the battery-powered cameras via Reolink App.

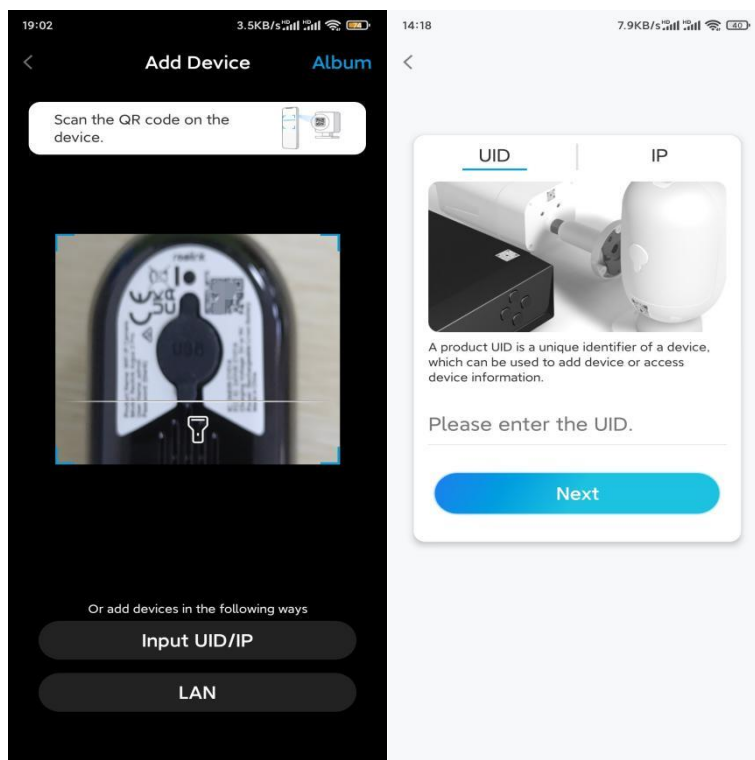
Step 1. Power on the camera. Remember to turn on the power switch on the camera before initial setup. After a startup sound, you will hear a **repeated Ding sound** or a **voice prompt**.

Note: The voice prompt you will hear may be "Welcome to Reolink, please install Reolink App and scan the QR code on the camera" in multilingual versions, or "please run Reolink App, add the camera and set it up".

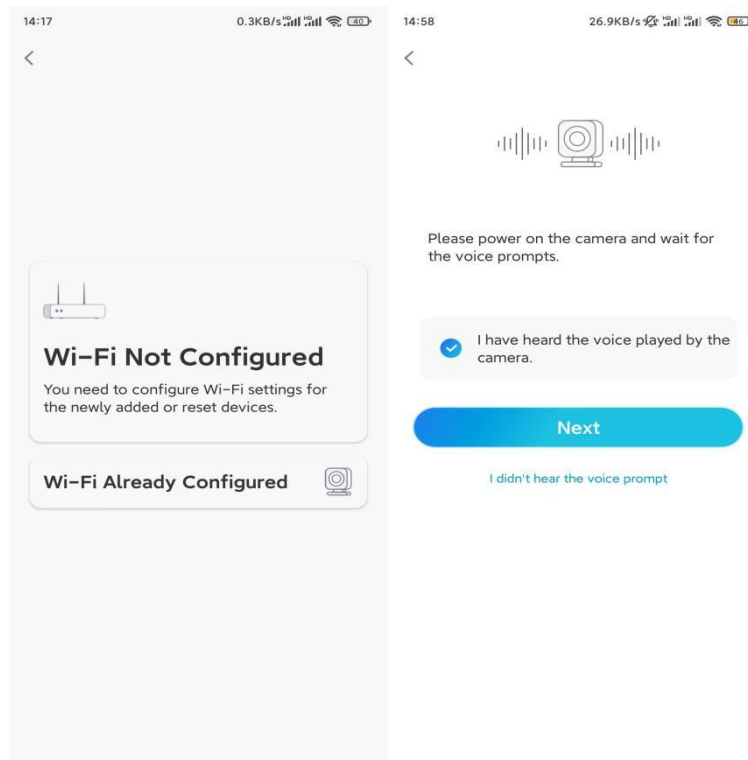
Step 2. Tap the icon  in the top right corner to start the initial setup.



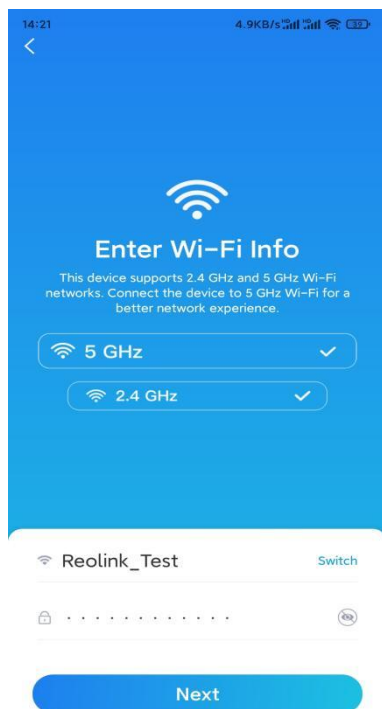
Step 3. Scan the QR code on the back of the camera. You may tap **Light** to enable a flashlight when setting up the camera in a dark environment. If the phone doesn't respond, please tap **Input UID/IP** and then manually type in the UID (16-digit characters under the QR code of the camera). Then click **Next**.



Step 4. Select **Wi-Fi Not Configured**. If you hear a voice prompt played by the camera, please tick correspondingly and then tap **Next**.

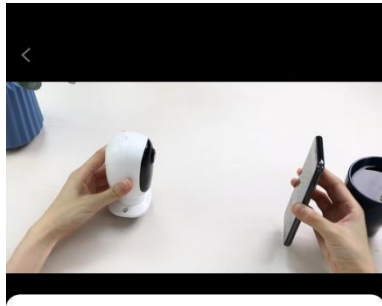


Step 5. Enter the WiFi password of the selected WiFi network (you may tap the right eye icon to see and double-check the password) and tap **Next**.

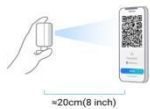


Note: Duo Series B750 supports 5/2.4 GHz dual-band WiFi.

Step 6. Tap **Scan Now**. Place the QR code on your phone in front of the camera's lens at a distance of about 20 cm (8 inches) and let the camera scan the QR code. Tick correspondingly and tap **Next**.



14:22 10.2KB/s



To connect your camera to Wi-Fi network, face it to your phone and let the camera scan the QR code on the screen.

Scan Now



Please face the camera towards QR code and keep scan distance around 20 cm (8 inches).

I have heard a beep sound from the camera.

Demo

Next

Scan failed?

Step 7. Wait around 60 seconds for the camera to connect to the router. After hearing "connection to the router succeeded", tick correspondingly and tap **Next**.

14:22 6.2KB/s

<



Camera is connecting to the router...



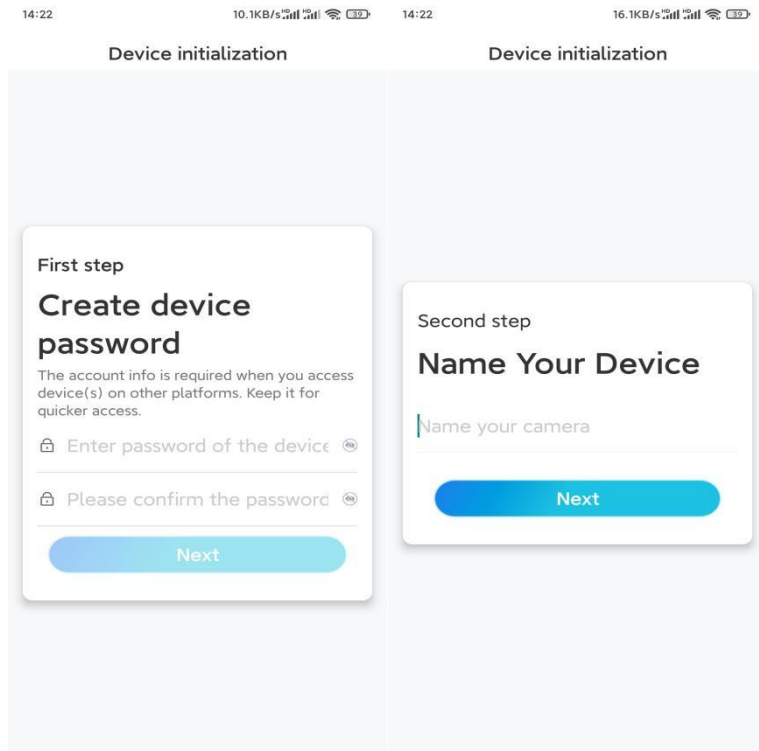
Connection to the router succeeded

I have heard the voice prompt

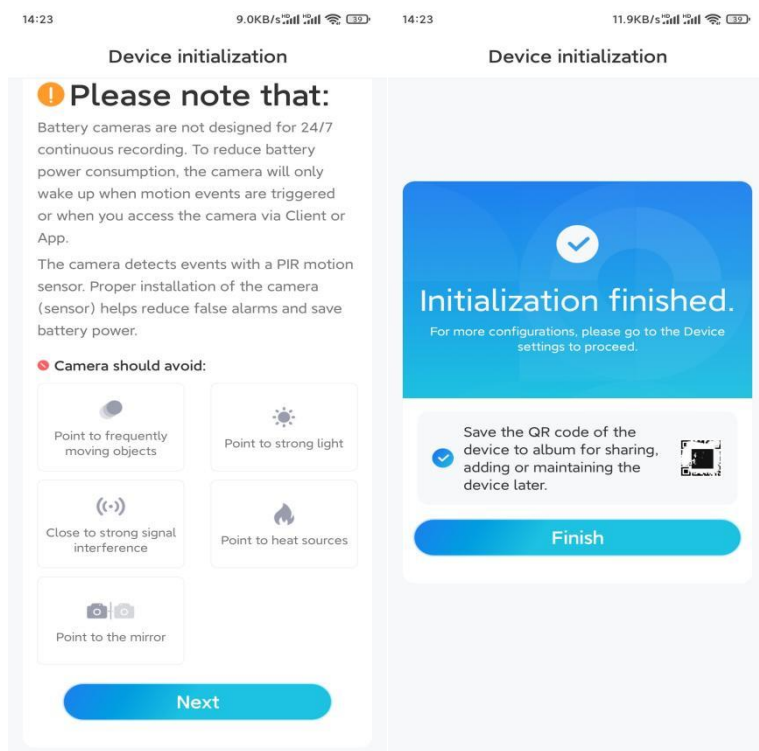
Next

Connection to the router failed

Step 8. Create a login password and then name your camera.



Step 9. Read the note below and then tap **Finish** to complete the initialization of your camera.



Once the initial setup is completed, you may choose a good position to mount your camera.

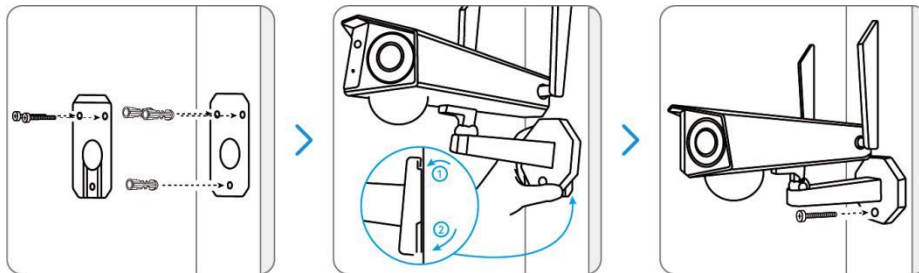
Install the Camera

We offer you guides on different scenes in which the camera could be installed. Check out them respectively.

Mount the Camera to the Wall

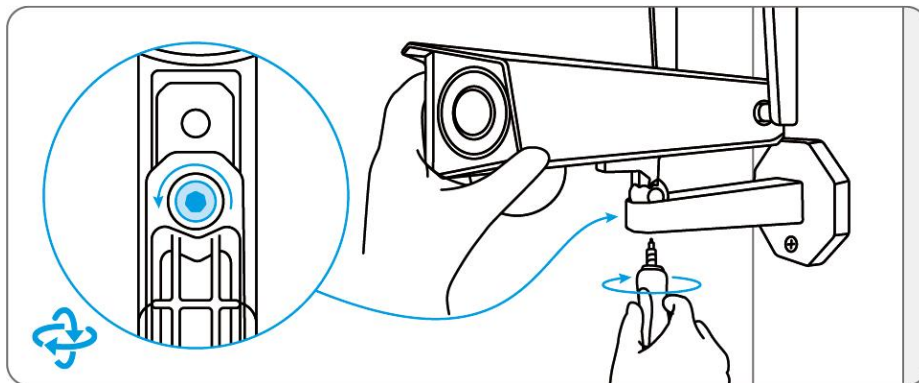
Step 1. Screw the camera onto the wall.

- Drill holes in accordance with the mounting hole template.
- Next, secure the mounting plate to the wall with the upper two screws and hang the camera on it.
- Then lock the camera in position with the lower screw.

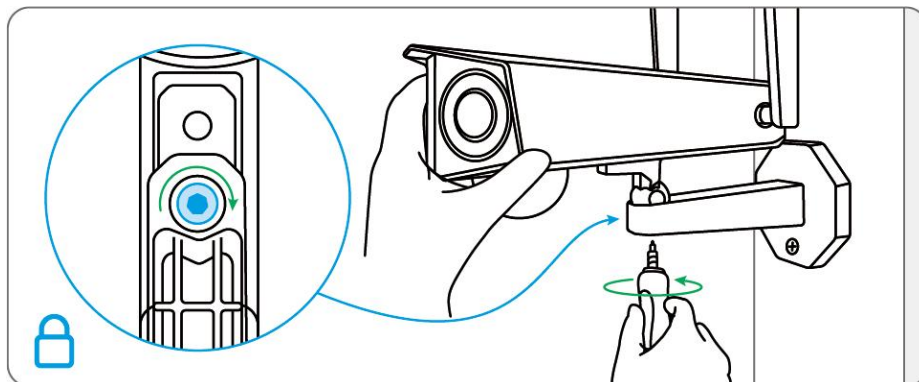


Note: Use the drywall anchors included in the package if needed.

Step 2. To get the best field of view, loosen the adjustment screw on security mount and turn the camera.



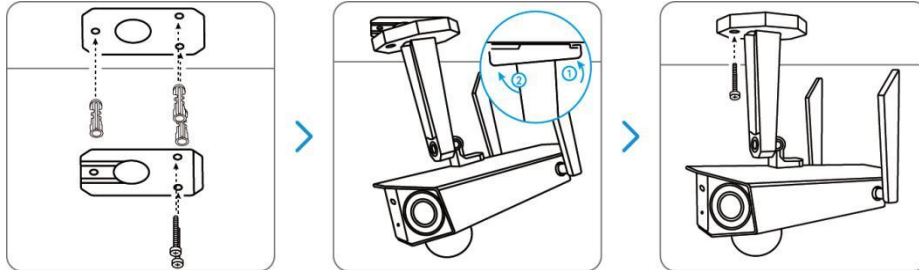
Step 3. Stiffen the adjustment screw to lock the camera.



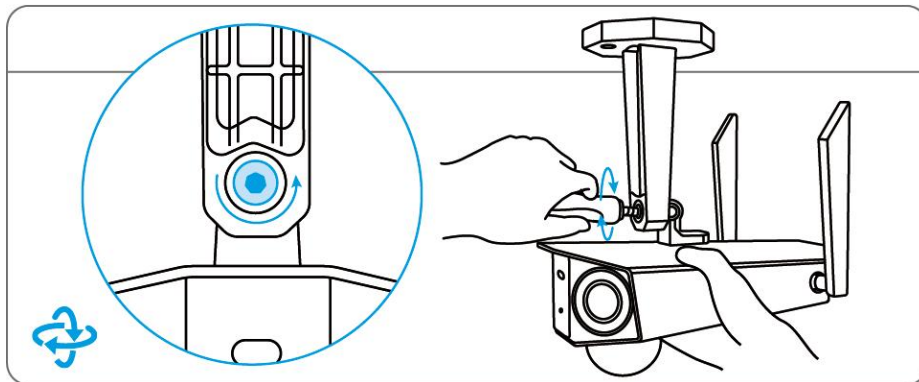
Mount the Camera to the Ceiling

Step 1. Screw the camera onto the ceiling.

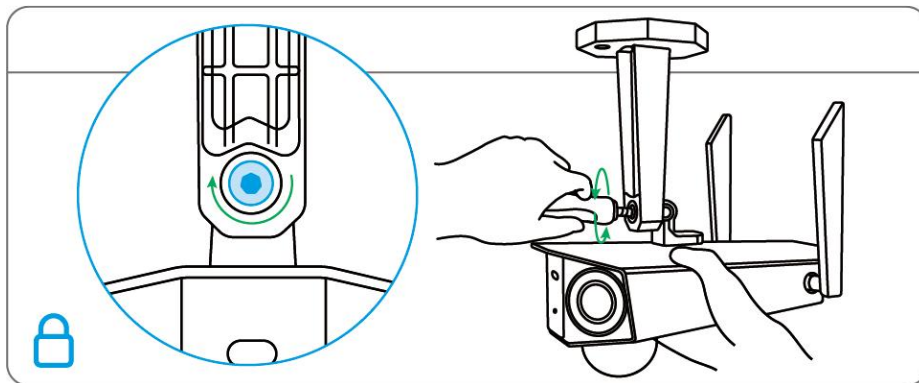
- Drill holes in accordance with the mounting hole template.
- Next, secure the mounting plate on the ceiling with the upper two screws and hang the camera on it.
- Then lock the camera in position with the lower screw.



Step 2. To get the best field of view, loosen the adjustment screw on security mount and turn the camera.

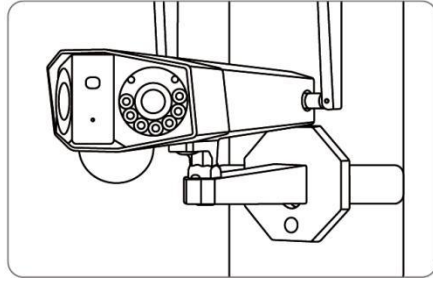
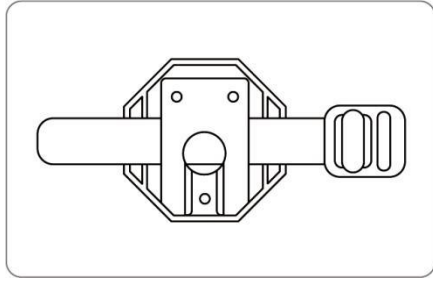


Step 3. Stiffen the adjustment screw to lock the camera.



Install the Camera with Loop Strap

Thread the loop strap through the slots and fasten the strap. It is the most recommended installation method if you plan to mount the camera to a tree.



Finished! Now you may start using your camera.